

70010 TATU SPEED DISK

HEAVY DUTY COMPONENTS

Rubber Torsion: With a special design that prevents slippage of the arm assembly.

High-Quality Disc Blades: The long-life tempered boron steel discs come in 20" or 22" diameters. The front/rear gang disc configurations include notched front/notched back and notched front/smooth back.

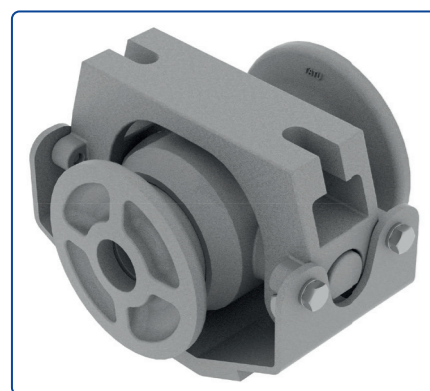
Rubber Torsion Suspension System:

The four rubber torsion elements are designed to function effectively in various weather and soil conditions. They are pre-tensioned to hold the discs in the ground while allowing them to follow the terrain contours and flex over obstructions such as rocks.

Mounted Shanks: Each shank is individually mounted, offering superior protection against rocks while promoting optimal residue flow.

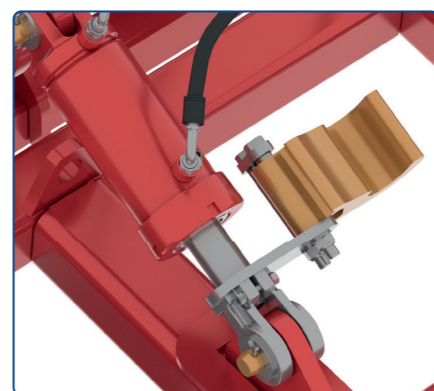
Heavy-Duty Roller Bearings for Extended Durability:

The disc hubs are equipped with high-quality tapered roller bearings, ensuring enhanced durability. By utilizing tapered bearings, this system achieves remarkable efficiency and allows for the complete replacement of internal components. As a result, it ensures profitability in maintenance while reducing overall expenses.



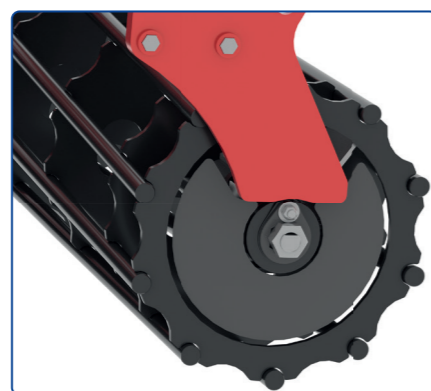
Swivel Oil Bath Bearing:

- Exclusively manufactured by TATU Marchesan;
- Reduced operation and maintenance costs of Speed Disk;
- Significantly longer lifespan of tapered roller bearings and duo cone seals.



Cylinder Rod Stops - Precision Depth Control System:

The Cylinder Rod Stops is a precision depth control system that enables operators to easily adjust the front and rear depth cylinders, ensuring precise control over the working depth. This system enhances the overall performance of the equipment by allowing the desired depth to be set in half-inch and quarter-inch increments



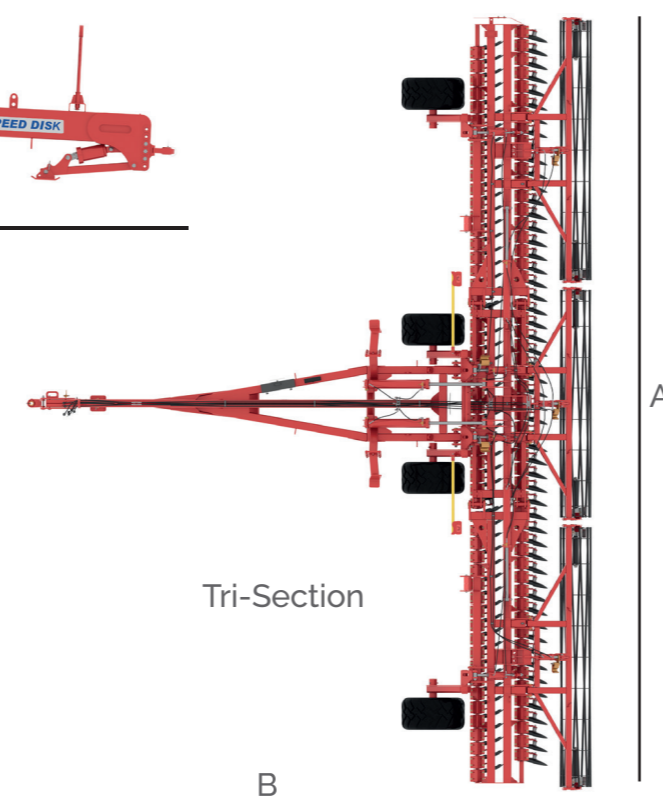
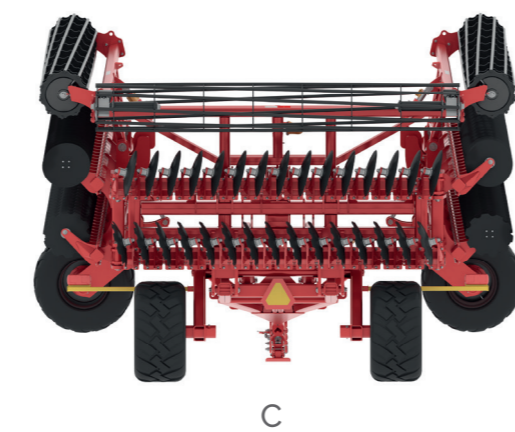
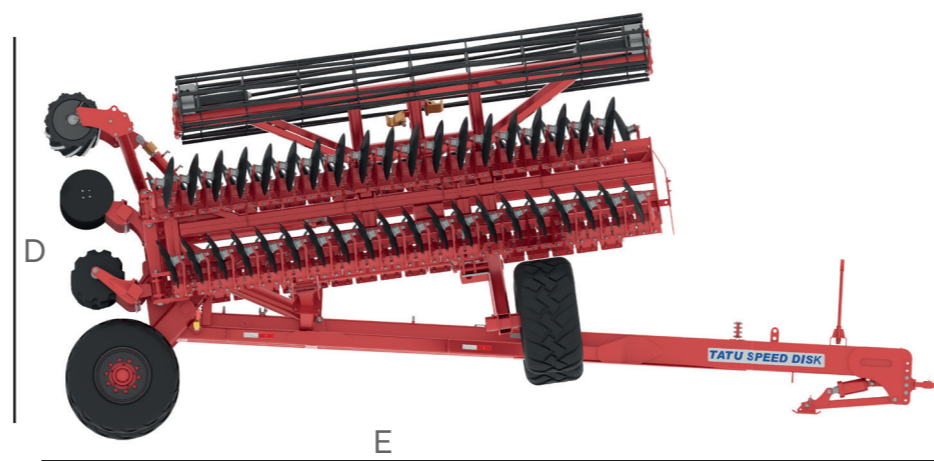
Cage Roller Cover:

Component designed for Speed Disk rollers that prevents accumulation and clogging, resulting in improved finishing and fewer interruptions.

70010 TATU SPEED DISK

TECHNICAL SPECIFICATIONS

70010 TATU SPEED DISK	Number of discs	Working width (A)	Unfolded length (B)	Transport width (C)	Transport height (D)	Transport length (E)	Weight (LBS)	Transport tongue weight (LBS)	Tire size wing	Space between blades	Tractor power (HP/FT)
Bi-section	50	21'	28'	10'8"	12'1"	21'9"	17,074	4,519	2 400/60 - 15.5 14 ply and 2 600/50 - 22.5 16 ply	10"	12 - 15
	60	25'	27' 4"	13'	12'6"	22'6"	22,094	4,74			
Tri-section	72	30'	27'4"	13'	13'	22'6"	23,933	6,175	600/50 - 22.5 16 ply	10"	12 - 15
	84	35'	34' 6"	16'	13'	29'11"	27,132	5.4			
	96	40'	34'6"	16'	13'5"	29'11"	28,973	6.5			
	108	45'	34'6"	18'	13'7"	29'11"	31,202	7.6			



MARCHESAN IMPLEMENTOS E MÁQUINAS AGRÍCOLAS TATU S.A.

Av. Marchesan, 1979 | CEP 15994-900 | Phone: + 55 16 3382.8282 | Matão-SP-Brasil | CNPJ: 52.311.289/0001-63 | Inscr. Est.: 441.000.151114

MARCHESAN S.A. reserves the right to perfect or change the characteristics of its products, without prior notice and without the obligation to proceed with those already marketed. The photos are only illustrative. Rev. 08 - 08/2023

www.tatu.ag



MARCHESAN

70010 TATU SPEED DISK

HIGH PERFORMANCE AT HIGH SPEED

Versatile, heavy duty, simple and easy to operate.

Ideal High-Speed Tillage Tool for Both Spring and Fall Season:

- Outstanding soil and surface finishing, speed up germination in the spring season.
- High performance in sizing and incorporating residue while leveling the field, in the fall season.



70010 TATU SPEED DISK

BENEFITS

SPRING APPLICATION

Prepares a uniform seedbed for fast and even emergence:

- High-speed, light footprint reduces compaction;
- Levels and firms the soil - further sizes and evenly distributes remaining residue;
- Effectively controls spring germinating weeds;
- Designed for working at speeds of up to 9-12 mph;
- Sizes and mixes residue into the soil;
- Levels the field;
- Incorporates spring-applied fertilizers and pre-plant chemical applications;
- Develops uniform soil structure that improves planter/seeder performance.



FALL APPLICATION

Sizes and incorporates residue while leveling the field:

- Designed for working at speeds of up to 9-12 mph;
- Chops, sizes and mixes residue into the soil while leveling the field;
- Effective as a first pass or second pass tillage in conjunction with a primary vertical tillage tool;
- Allows faster soil warming in the spring for quicker emergence;
- A versatile tool that performs well in challenging conditions that would hinder most fall tillage;
- Effectively incorporates fall surface-applied fertilizers into next year's seedbed.

70010 TATU SPEED DISK

HOW IT WORKS

The Tatu Speed Disk aggressively fractures the soil and cuts, sizes, and incorporates the residue at shallow levels during high-speed field operations.

The front disk section cuts and sizes the residue, as well as fractures and lifts the soil and residue mixture, passing it to the back disk section for incorporation and leveling of the soil profile. The back disk section recuts, resizes, and finishes the inversion of the soil, returning the mixture back over the soil. The cage roller then levels and texturizes the soil.

In major crops, more than half of the chopped residues are mixed into the soil profile, returning the nutrient-rich residues to the ground instead of being exposed to weather conditions. The remaining portion of chopped residues remains on the soil surface as a protective layer, preventing nutrient loss and safeguarding the soil profile against erosion caused by wind and water.



Counter-following design: The front and rear gangs on the TATU Speed Disk are positioned closer together compared to traditional disks, enabling it to closely follow the ground contours for improved depth control.

Designed for maximum soil and residue flow: 10" disc spacing on front and rear gangs allows excellent soil and residue flow, facilitating the sizing and mixing of residue into the soil profile to accelerate the breakdown process and release of nutrients into the soil.



70010 TATU SPEED DISK

TECHNICAL SPECIFICATIONS AND BENEFITS

Cage Roller Basket: Provides superior soil leveling and excellent surface texture, making it ideal for planting and seeding. It effectively controls soil erosion and promotes increased yield through even emergence. The cage roller can be operated in both the raised and lowered positions. It works excellently in both spring and fall seasons, adapting to a wide variety of field conditions.

Swivel Oil Bath Bearing: The TATU exclusive sealed, heavy-duty swivel oil bath bearing system offers significantly longer lifespan compared to competitive pillow block-style ball bearings.



Rear Gang Set: Performs transverse cutting and soil inversion with a 14° disc blade angle.

Disc Hub: Equipped with high-quality tapered roller bearings ensure durability. Tapered bearings enable efficient performance and complete internal component replacement, promoting maintenance profitability and cost reduction.

Dumping System: Utilizes heavy-duty rubber torsion components for smooth arm trailing along soil contours. It incorporates a 9-inch travel rubber torsion damping system to absorb impacts from rocks and adapt to various soil profiles.

Front Gang Set: Cuts and sizes residues, tills and mixes soils, creating an excellent seedbed with a 17° disc blade angle.

Flotation Tire: The high flotation radial tire provides a wider footprint area, resulting in lighter weight distribution and reduced soil compaction.